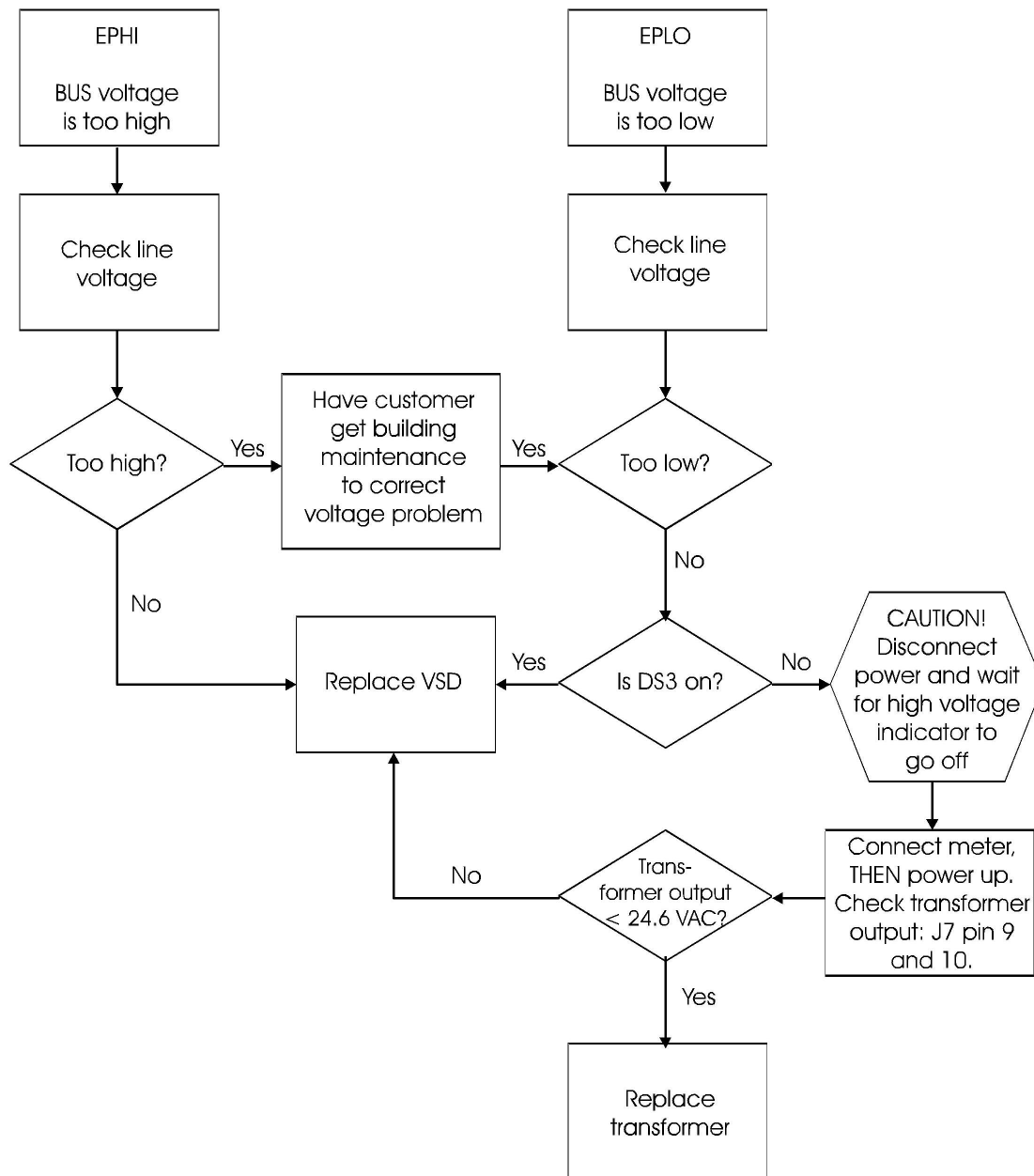


Flow Charts

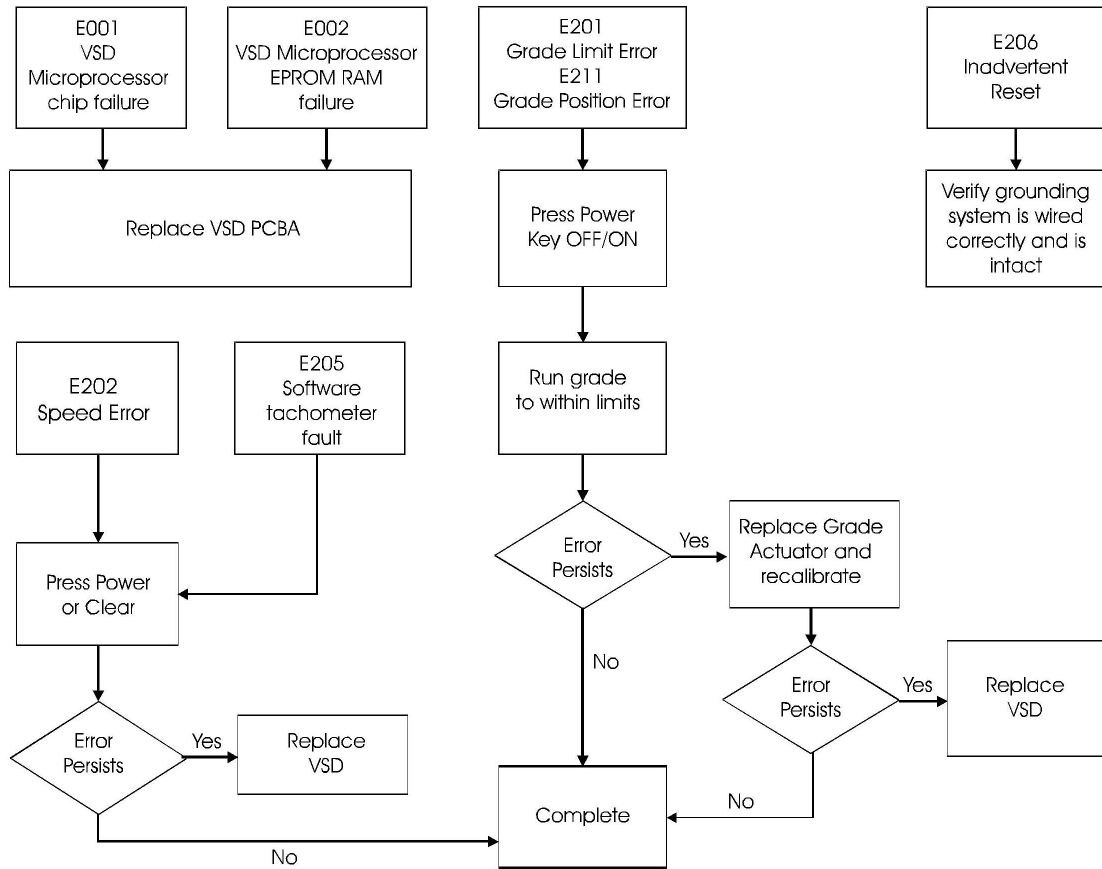
Use the following flow charts for step-by-step troubleshooting.

- For Plus models, use the error log to determine recent errors. See “Error Log (Plus Models only)” on page 3-7

Error Code Flow Chart: EPHI and EPLO

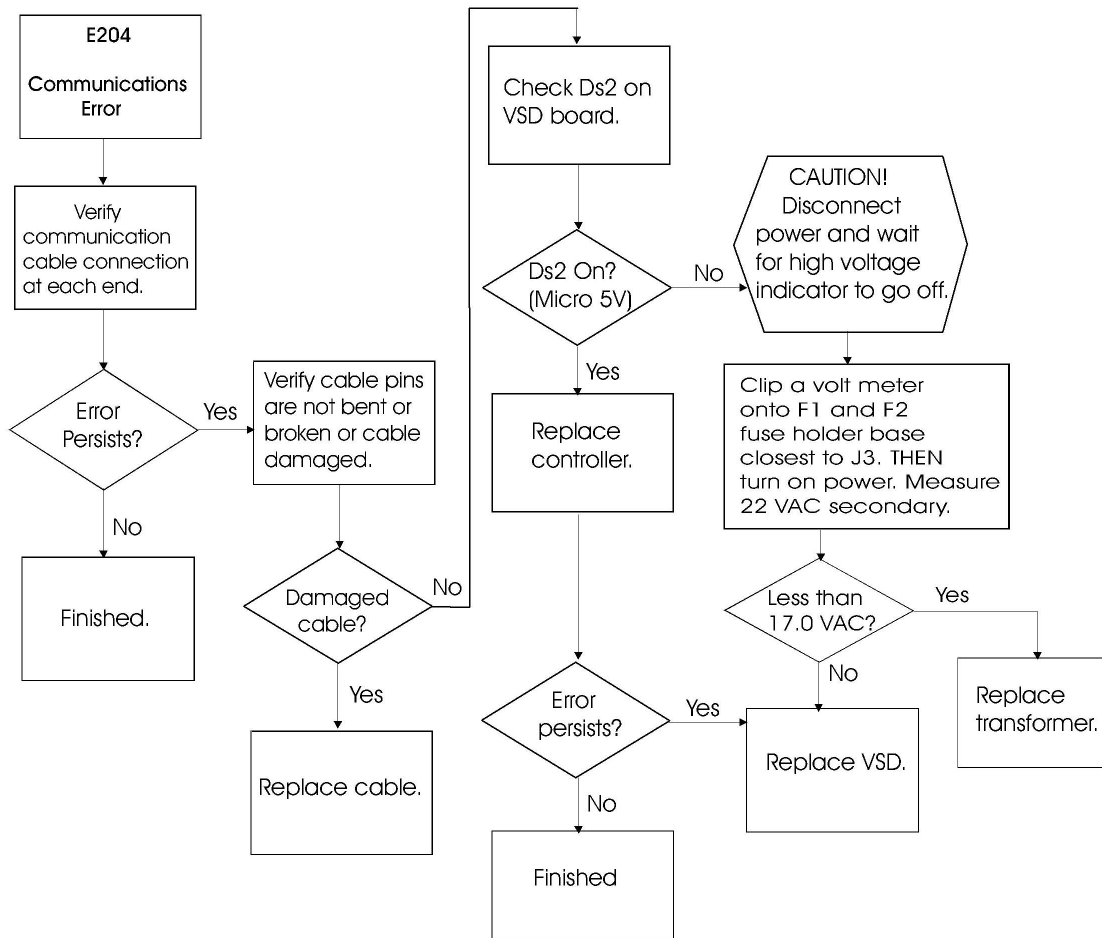


BUS Voltage



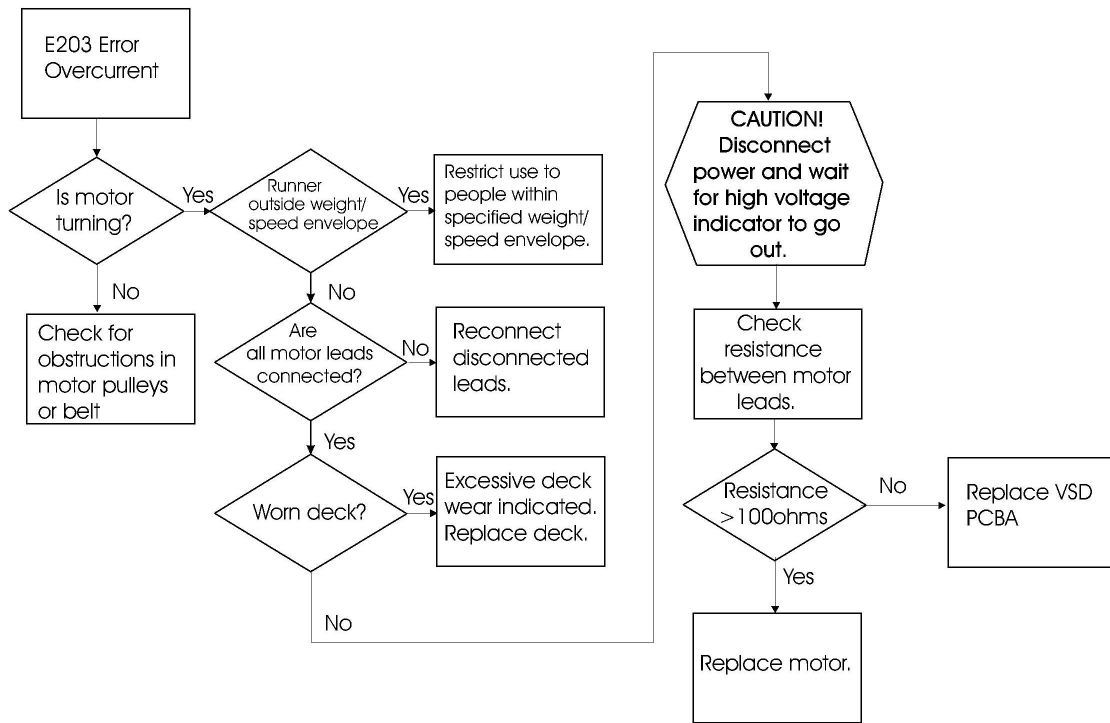
VSD Board

Error Code Flow Chart: E204



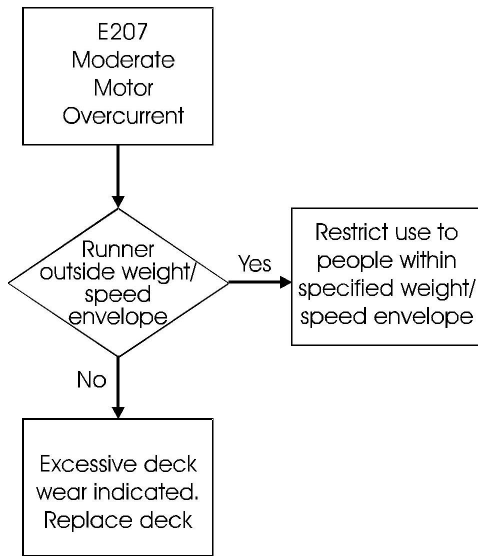
Communications Link

Error Code Flow Chart: E203

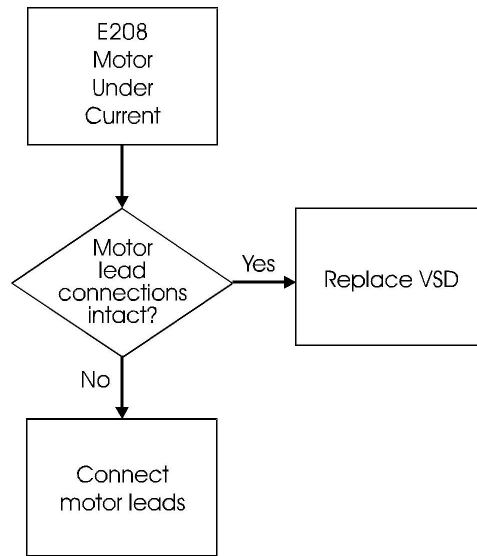


Motor Overcurrent

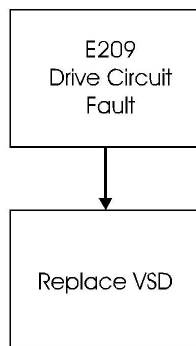
Error Code Flow Charts: E207, E208, E209, E210



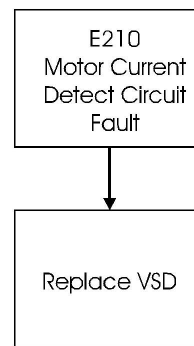
Moderate Motor Overcurrent



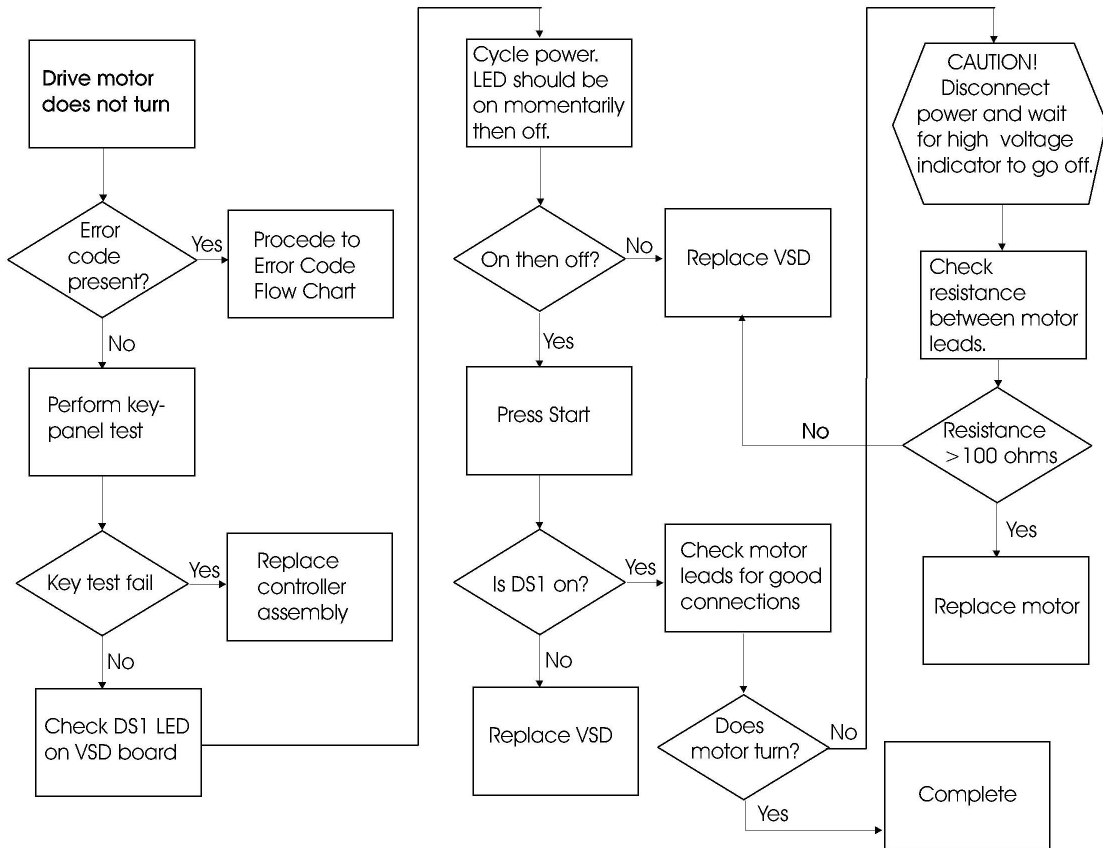
Moderate Motor Undercurrent



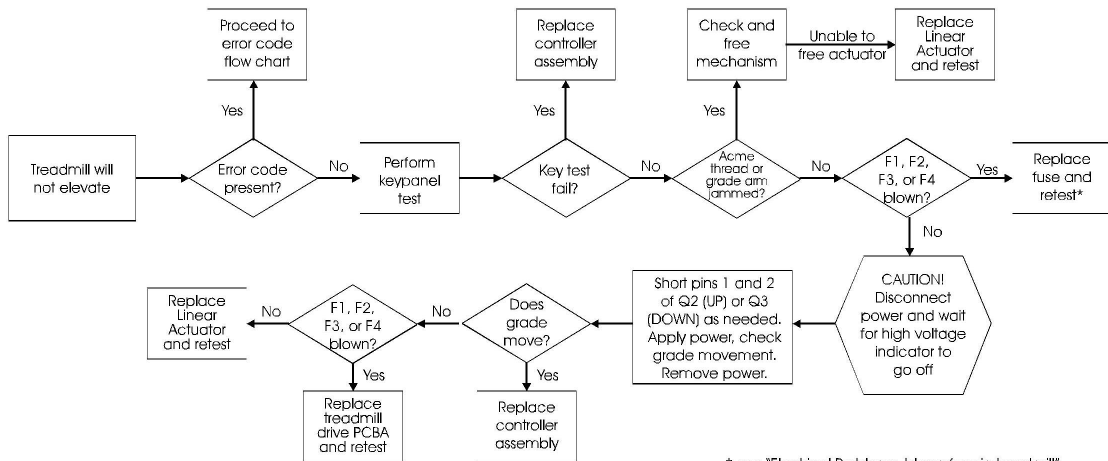
Drive Circuit Fault



Drive Current Detect Fault



Drive Motor



* see "Electrical Problems, blown fuse in treadmill"

Grade Problems